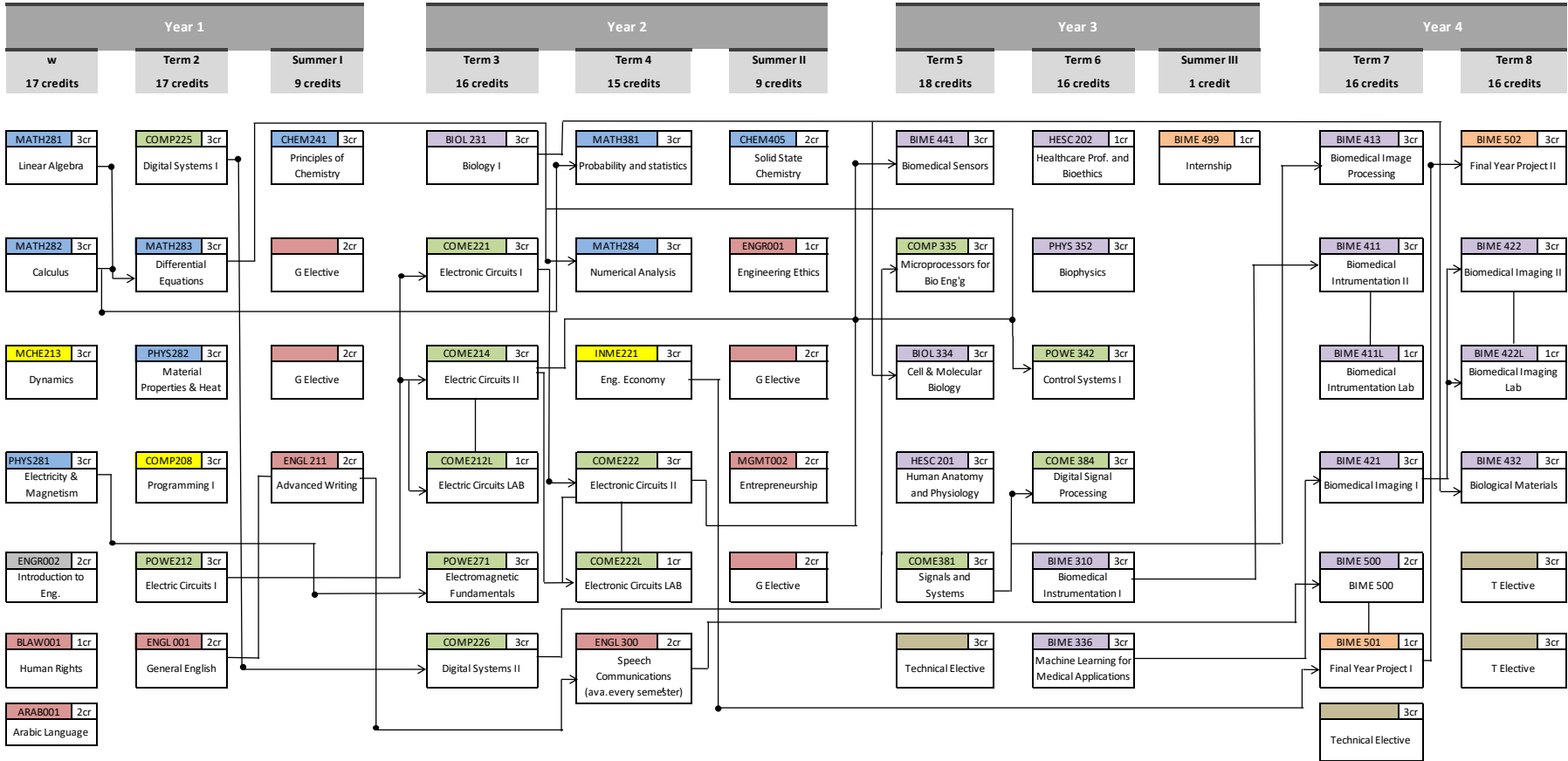




**DEPARTMENT OF ELECTRICAL & COMPUTER ENGINEERING  
BIOMEDICAL ENGINEERING PROGRAM  
UNDERGRADUATE CURRICULUM GUIDE**



- Math and Basic Sciences (26 credits)
- General Education (20 credits)
- General Engineering (9 credits)
- Eng'g Topics from outside major (2 credits)
- Basic ECE Courses (35 credits)
- BME Core (41 credits)
- Internship and Final Year Project (5 credits)
- Technical Electives (12 credits)